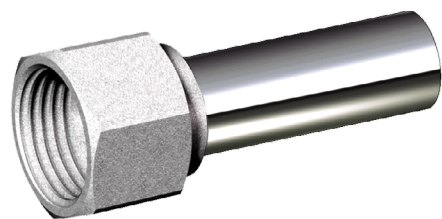




## TUBO RAME CROMATO CON RACCORDO 1/2" FEMMINA ART.8876



ATTACCO 1/2" FEMMINA

TUBO RAME Ø15 mm  
Lunghezza: 50 mm

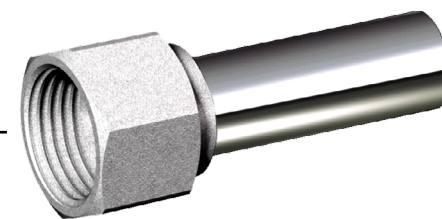
### CARATTERISTICHE TECNICHE

Pressione nominale: 10 bar  
 Temperatura massima di esercizio: 95°C  
 Fluidi utilizzabili: Acqua

VF310 EDIZIONE N°1: 21/06/2016



## TUBO RAME CROMATO CON RACCORDO 1/2" FEMMINA ART.8876



ATTACCO 1/2" FEMMINA

TUBO RAME Ø15 mm  
Lunghezza: 50 mm

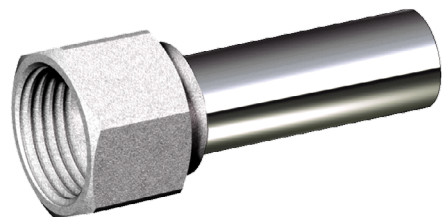
### CARATTERISTICHE TECNICHE

Pressione nominale: 10 bar  
 Temperatura massima di esercizio: 95°C  
 Fluidi utilizzabili: Acqua

VF310 EDIZIONE N°1: 21/06/2016



## TUBO RAME CROMATO CON RACCORDO 1/2" FEMMINA ART.8876



ATTACCO 1/2" FEMMINA

TUBO RAME Ø15 mm  
Lunghezza: 50 mm

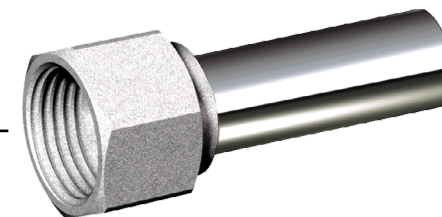
### CARATTERISTICHE TECNICHE

Pressione nominale: 10 bar  
 Temperatura massima di esercizio: 95°C  
 Fluidi utilizzabili: Acqua

VF310 EDIZIONE N°1: 21/06/2016



## TUBO RAME CROMATO CON RACCORDO 1/2" FEMMINA ART.8876



ATTACCO 1/2" FEMMINA

TUBO RAME Ø15 mm  
Lunghezza: 50 mm

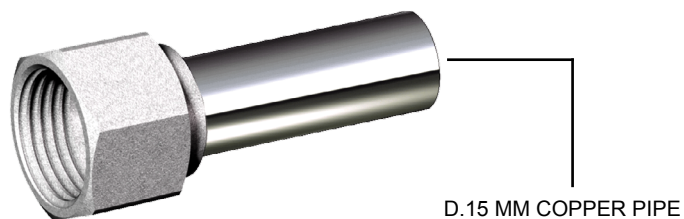
### CARATTERISTICHE TECNICHE

Pressione nominale: 10 bar  
 Temperatura massima di esercizio: 95°C  
 Fluidi utilizzabili: Acqua

VF310 EDIZIONE N°1: 21/06/2016



**CHROME-PLATED COPPER PIPE  
WITH THREADED FITTING ART. 8876**



1/2" FEMALE CONNECTION

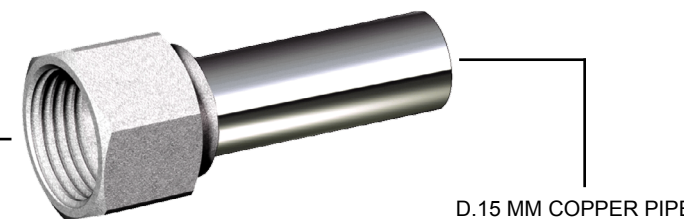
D.15 MM COPPER PIPE  
Length: 50 mm

**TECHNICAL FEATURES:**

Nominal pressure: 10 bar  
Max. working temperature : 95 °C  
Compatible fluids: water



**CHROME-PLATED COPPER PIPE  
WITH THREADED FITTING ART. 8876**



1/2" FEMALE CONNECTION

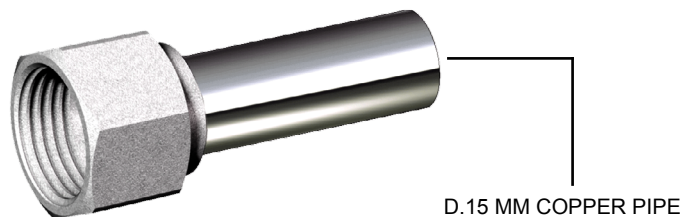
D.15 MM COPPER PIPE  
Length: 50 mm

**TECHNICAL FEATURES:**

Nominal pressure: 10 bar  
Max. working temperature : 95 °C  
Compatible fluids: water



**CHROME-PLATED COPPER PIPE  
WITH THREADED FITTING ART. 8876**



1/2" FEMALE CONNECTION

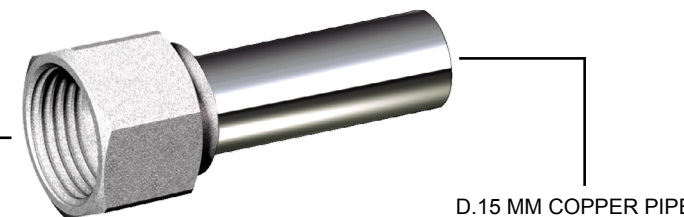
D.15 MM COPPER PIPE  
Length: 50 mm

**TECHNICAL FEATURES:**

Nominal pressure: 10 bar  
Max. working temperature : 95 °C  
Compatible fluids: water



**CHROME-PLATED COPPER PIPE  
WITH THREADED FITTING ART. 8876**



1/2" FEMALE CONNECTION

D.15 MM COPPER PIPE  
Length: 50 mm

**TECHNICAL FEATURES:**

Nominal pressure: 10 bar  
Max. working temperature : 95 °C  
Compatible fluids: water